



RACO Floor Boxes



General Applications

RACO floor boxes are ideally suited for heavy floor traffic applications, such as shopping malls, retail stores, banks and schools. Floor boxes are installed in poured concrete floors and are fed with conduit. RACO's complete line includes both single service and three-service (power and voice/data) floor boxes, which are available in cast iron, stamped steel and PVC plastic. Floor box covers and carpet flanges are offered in brushed brass and textured thermoplastic in two designer colors, ivory and gray. RACO floor boxes:

- Are used in branch circuit wiring
- Accommodate wiring devices such as receptacles for voice/data
- Provide excellent protection for wiring system or devices
- Must be closed with a cover
- Permit access to conductors for maintenance

Non-Adjustable Style Floor Box Features

This type of box has no means for adjustment. It is usually installed in wooden floors or used for retrofit in concrete.

RACO quality non-adjustable floor boxes feature:

- Rugged cast iron for strength and ground continuity
- Factory-installed ground wire
- Simple one-piece floor box design offers flexibility for power outlet or voice/data outlets
- Conveniently positioned conduit entries are tapped and plugged

Fully-Adjustable Floor Box Features

This type of box has leveling screws for height and leveling adjustments to be made before the concrete is poured, and final leveling adjustments after the concrete is poured. The maximum leveling adjustment is a 7° tilt.

Fully-Adjustable Floor Boxes feature:

- Concrete-tight floor boxes for use in power or voice/data
- Cast iron boxes classified as water-tight and concrete-tight, typically used below grade where excessive moisture is present
- Choice of materials — stamped steel or cast iron
- Cast iron floor box including factory-installed ground wire, and multiple gang boxes with one ground wire per gang
- Multiple gang boxes provided with low voltage partitions
- Ample wiring space for any combination of power outlet or voice/data outlets

Standard Materials

- Nonmetallic floor box is made of heavy-duty PVC (Polyvinyl chloride) compound. Base material is recycled
- Steel floor boxes are made of .0625-inch-thick steel
- Cast iron floor boxes are made from cast iron having a high tensile strength
- Solid brass covers and carpet flanges
- Nonmetallic floor box covers and carpet flanges are made of high-strength thermoplastic (ABS).

Standard Finishes

- Natural gray finish on nonmetallic floor box
- Nonmetallic floor box covers and carpet flanges are available in gray and ivory
- Steel boxes have a zinc coating
- Cast iron floor boxes have a gray powder coat paint finish
- Solid brass covers and carpet flanges have a brushed finish

Compliances

Floor boxes are subject to the same code requirements and minimum conductor fill requirements as other boxes. RACO floor boxes carry the following compliances:

- UL Standard 514-A, file E4872
- Boxes are listed for their Electrical Applications (Electrical Codes), UL Green Book
- U.S. Federal Specification and Standards W-C-583B
- Federal Manufacturer's number 28488

Reference Data

- Minimum wiring capacity calculation can be found on pages A8 of this catalog.

Floor Box Installation

Installing a fully-adjustable floor box in a poured concrete floor: RACO provides with all box assemblies or flanges a metallic concrete cover. The concrete cover permits pouring concrete to the top of the box. The cover is then easily removed after the pour. To install the box:

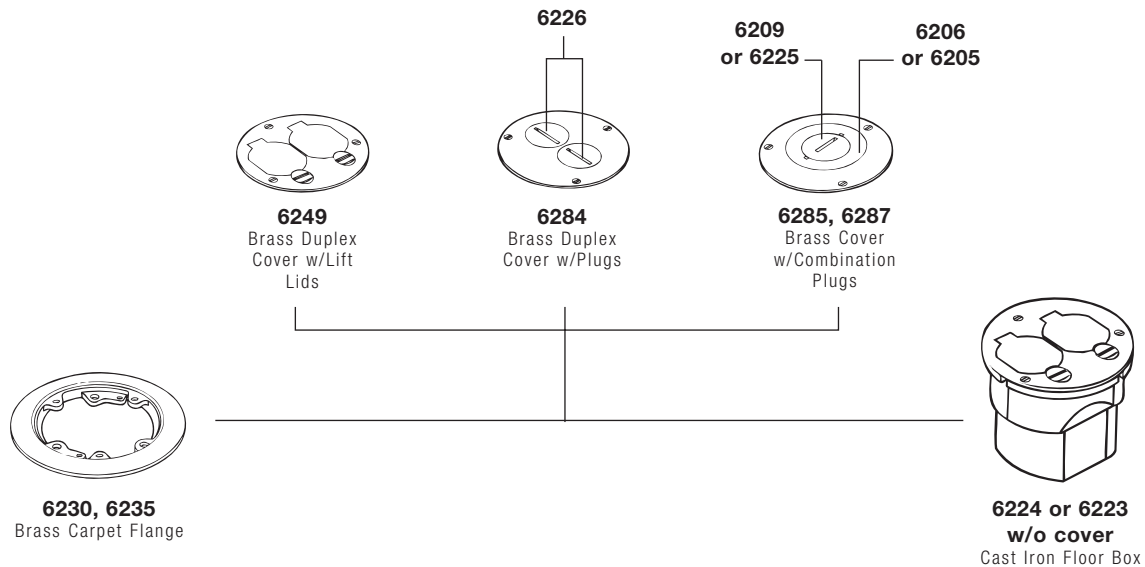
- Locate box and install conduit in accordance with local codes
- Secure box to reinforcing bar (mesh)
- Make pre-pour height and leveling adjustments
- Grease inside of cement cover and install on box
- Grease outside of cement cover
- Apply bead of grease on exposed portion of adjusting collar
- Tape cement cover to box
- Pour concrete
- After the concrete has set, remove the concrete cover
- Pull wires and install wiring device
- Make final pour adjustments, and grout around the box if required
- Install cover plates and/or accessories



RACO®

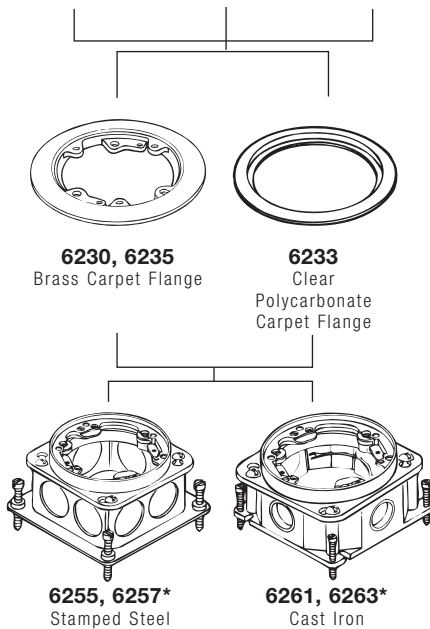
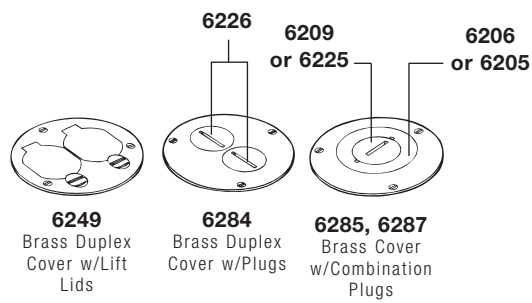
SUMMARY OF THE MOST OFTEN REQUESTED ARTICLES OF THE 1999 NATIONAL ELECTRICAL CODE	HOW RACO PRODUCTS HELP COMPLETE THE INSTALLATION
<p>210-52 (a) Dwelling Unit Receptacle Outlets — General Provisions. In every kitchen, family room, dining room, living room, parlor, library, den, sun room, bedroom, recreation room, or similar room or area of dwelling units, receptacle outlets shall be installed so that no point along the floor line in any wall space is more than 6 feet, measured horizontally, from an outlet in that space, including any wall space 2 feet or more in width and the wall space occupied by fixed panels in exterior walls, but excluding sliding panels in exterior walls. The space afforded by fixed room dividers, such as free-standing bar-type counters or railings, shall be included in the 6-foot measurement.</p>	<p>Every 6 feet along the wall surface there should be a receptacle outlet regardless of the room within the dwelling. The purpose of this Article is to eliminate extension cords that are used within the dwelling. Electrically overloaded extension cords are often a source of fires. Installation of a RACO floor box may help alleviate the need for extension cords by locating receptacles where no wall outlets are installed.</p> <p>Receptacle outlets in floors can be counted as part of the required number of receptacles if they are within 18 inches of the wall.</p>
<p>250-146 Connecting Receptacle Grounding Terminal to Box. An equipment bonding jumper shall be used to connect the grounding terminal of a grounding-type receptacle to a grounded box. <i>Exception (c): Floor boxes designed for and listed as providing satisfactory ground continuity between the box and the device.</i></p>	<p>All RACO floor boxes are designed and listed for having ground continuity without an equipment bonding jumper. RACO does provide on all of its cast floor boxes a factory-installed ground wire.</p>
<p>370-27 (b) Outlet Boxes —Floor Boxes. Boxes listed specifically for this application shall be used for receptacles located in the floor. Exception: Boxes located in elevated floors of show windows and similar locations where the authority having jurisdiction judges them to be free from physical damage, moisture, and dirt.</p>	<p>Only boxes that are UL Listed for the application may be fastened into the floor.</p>
<p>800-52 (c) Installation of Communications Wires, Cables, and Equipment — Electric Light or Power Circuits. Communications conductors shall not be placed in any raceway, compartment, outlet box, junction box, or similar fitting with conductors of electric light or power circuits or Class 1 circuits.</p>	<p>This Article applies when power and voice/data are brought to one enclosure. A means of dividing the wiring is required. Voltage dividers are available for the following floor box types: PVC floor box and rectangular fully-adjustable.</p>

NON-ADJUSTABLE FLOOR BOX SYSTEM

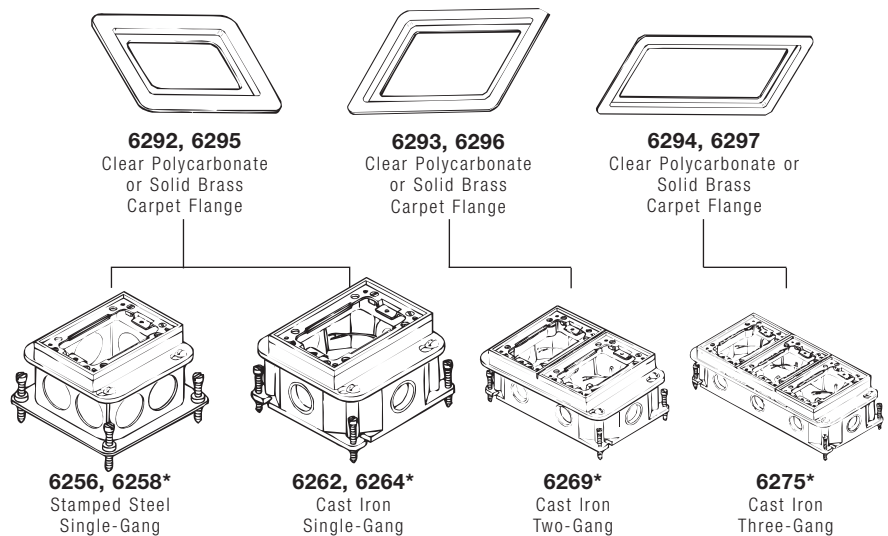
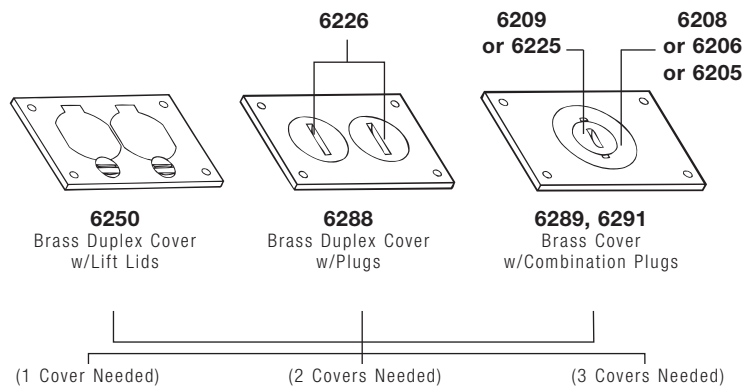


FULLY-ADJUSTABLE FLOOR BOX SYSTEM

ROUND FLOOR BOX



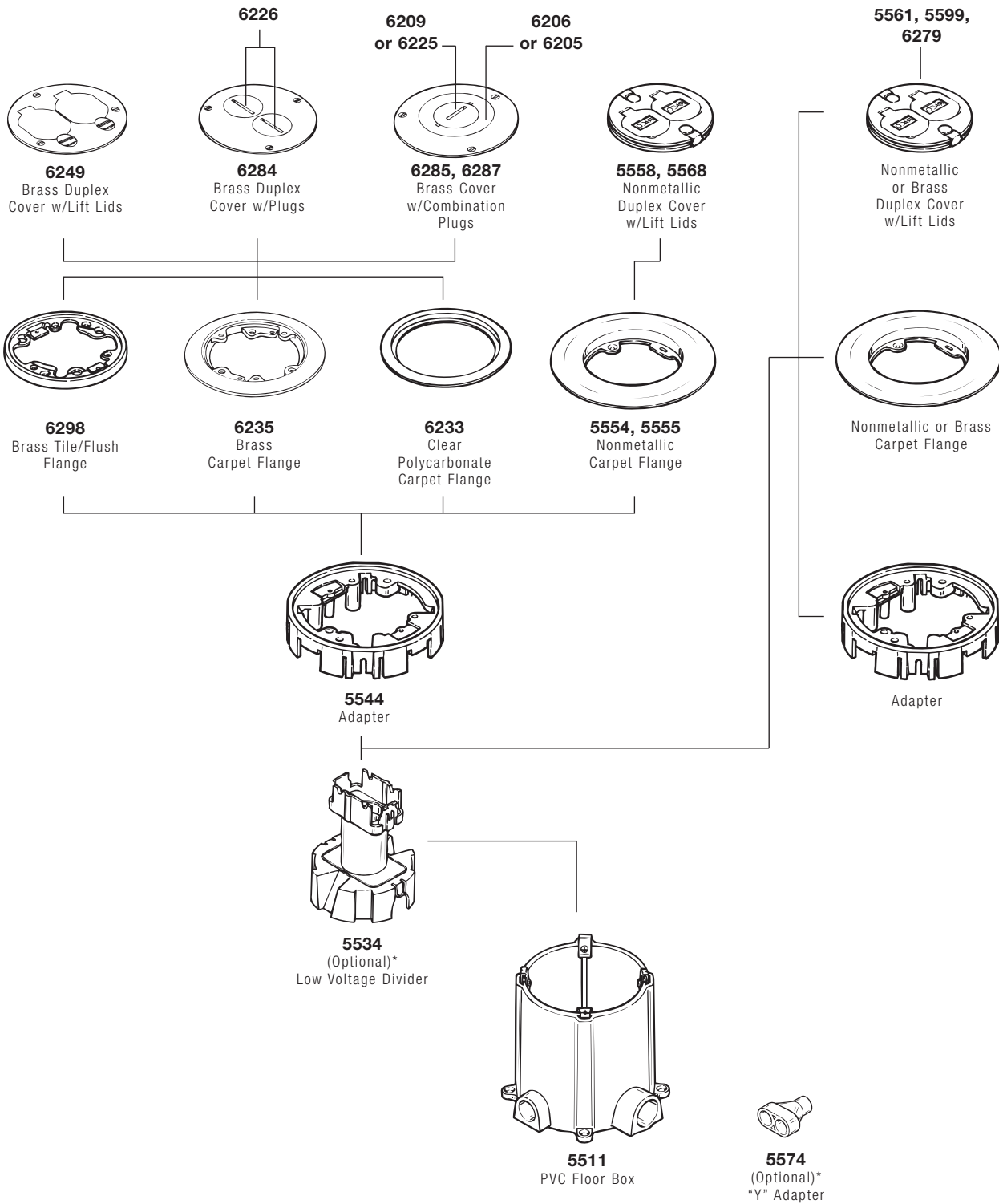
RECTANGULAR FLOOR BOX



* Included brass tile ring must be removed and discarded before installation of brass carpet flanges. Polycarbonate flanges are installed between box and included brass ring

QUICK SELECTION GUIDE

PVC FLOOR BOX SYSTEM



* Nonmetallic Box – Multi-Service Option: A voltage separation unit allows the nonmetallic box to be used for telephone/data service as well as power. As shown, the unit has two pieces. The lower portion has openings on opposite sides for power wires and ramps on the other two sides for telephone/data wires. Power wires run inside tube and attach to duplex receptacle. Telephone/data wires run outside of tube and pass through grommet(s) in the cover

Before installing lower part of voltage separation unit, cut off the same amount from the tube as you cut off the box. Complete the installation of the carpet flange, duplex receptacle and cover

Applications

- Used in branch circuit wiring
- Accommodate wiring devices for various receptacles
- Permit access to conductors for maintenance

General Features

- RACO® nonmetallic floor box has been engineered from the inside out with features that reduce installation time and offer increased capabilities from one box in power, voice, and data
- Hubbell nonmetallic floor boxes are economical to install and easy to level off
- A wide choice of cover materials and finishes are available

Low Voltage Divider Features

- Installs inside 5511 floor box for multi-service applications. Use separate conduit runs for power and voice/data cables
- Accepts Hubbell standard duplex receptacles or 15A Twist Lok® duplex receptacles (HBL 4700 series)
- Power capacity — 19.60 cubic inches plus 2.40 cubic inches per inch of tube

Adapter Ring Features

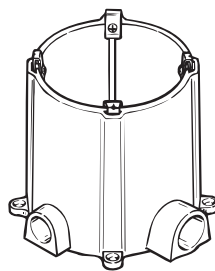
- Required for each 5511 floor box (accepts plastic and metal covers)
- Mechanically fasten adapter to 5511 floor box with included retaining clips and screws. Clips slide into slots in box wall

PVC Floor Box Features

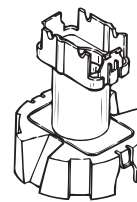
- High-strength rigid non-corrosive PVC construction
- Large capacity box: 100 cubic inches of volume (before cut)
- Molded T-slots permit the adapter ring to be secured to the box no matter where the box has been cut
- One-piece box with pre-molded conduit hubs
- RACO® Y-Adapter permits two parallel feeds of 3/4" conduit, or feed in/out of the same side

Compliance

- 



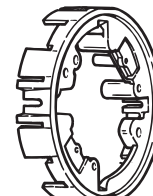
5511



5534





5574

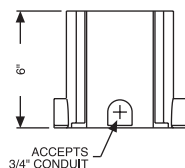
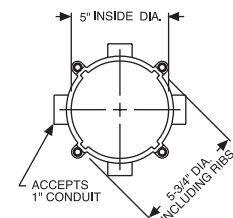


5544

ORDERING INFORMATION - DIMENSIONS

ROUND FLOOR BOX AND ACCESSORIES - NONMETALLIC			
CATALOG NUMBER	DESCRIPTION	STD. PKG.	UPC BAR CODE
5511	19.5 cubic inch capacity per inch of height (2) 1" and (2) 3/4" openings. Temporary cover and (4) reducer/closure plugs included.	1	
5534	Voltage separation unit, optional	10	
5574	3/4" Y adapter, PVC	10	—
5544	Adapter ring for all nonmetallic and brass flanges	10	—

NONMETALLIC FLOOR BOX


RACO®

FLOOR BOXES NONMETALLIC

Application

- Floor box assemblies provide a quick, simple method of completing floor box installation on carpeted floor

Product Features

- Floor box assembly kits are designed to be used with RACO® round nonmetallic floor box, catalog number 5511
- Kits include adapter ring, nonmetallic or brass carpet flange, and nonmetallic or brass cover
- Nonmetallic carpet flanges and covers are available in gray or ivory finish
- Covers are outfitted with duplex flaps that automatically close when not in use, preventing breakage and eliminating a potential trip hazard
- Cover design keeps debris out when receptacles are not in use
- Hubbell RACO® carpet flanges and covers install quickly and easily with provide screws
- 3-service floor box cover with duplex flap, two 1/2" diameter low-voltage knockouts. Each low-voltage knockout can accommodate up to (1) 25 pair telephone cable or (1) 50 wire data communications cable.
Note: Brass cover is not 3-service

Compliance

- UL



5558, 5568

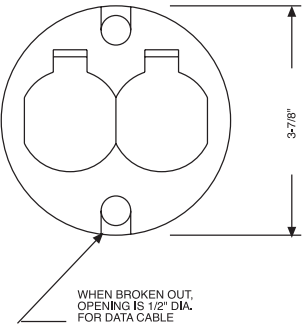
5554, 5555

ORDERING INFORMATION - DIMENSIONS

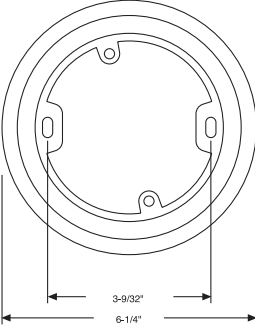
FLOOR BOX COVER ASSEMBLY KIT NONMETALLIC AND BRASS				
CATALOG NUMBER	DESCRIPTION	CARPET FLANGE O.S. DIAMETER	STD. PKG.	UPC BAR CODE
5561	Adapter, nonmetallic ivory carpet flange, Ivory duplex cover	6-1/4"	10	
5599	Adapter, nonmetallic gray carpet flange, Gray duplex cover	6-1/4"	10	
6279	Adapter, brass carpet flange Brass duplex cover	6-1/4"	10	

REPLACEMENT COVERS AND CARPET FLANGES - NONMETALLIC				
CATALOG NUMBER	DESCRIPTION	CARPET FLANGE O.S. DIAMETER	STD. PKG.	UPC BAR CODE
5558	Ivory nonmetallic duplex cover with lift lids	—	10	—
5568	Gray nonmetallic duplex cover with lift lids	—	10	—
5554	Ivory nonmetallic carpet flange	6-1/4"	10	—
5555	Gray nonmetallic carpet flange	6-1/4"	10	—

REPLACEMENT COVERS



REPLACEMENT CARPET FLANGES



Application

- Floor box flanges and covers are used to complete floor box installations on either carpet or tile

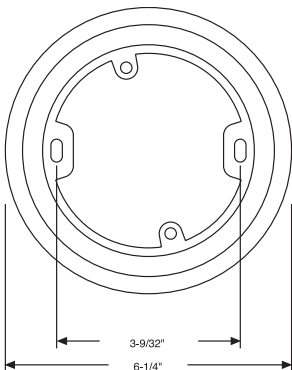
Product Features

- Brass floor box covers are designed to be used with round RACO® carpet and tile flanges and RACO® round full adjustable stamped steel and cast iron floor boxes
- Flanges are designed to be installed to RACO® adapter ring, catalog number 5544
- 6230 is not designed to work with RACO® 5511 nonmetallic floor box
- 6230 and 6235 are not designed to be used with RACO® 6220
- Hubbell RACO® carpet flanges, tile flanges and covers install quickly and easily with provided screws
- Order of installation
 - Install RACO® floor box
 - Install nonmetallic adapter ring (if round 5511 nonmetallic box is used)
 - Install device to box or 5544 adapter
 - Install carpet or tile flange
 - Install cover to carpet or tile flange

Compliances

- UL
- SR

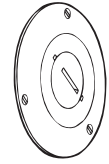
6-1/4" REPLACEMENT CARPET FLANGES



6249



6284



6285, 6287



6230, 6235



6233



6298

ORDERING INFORMATION - DIMENSIONS

ROUND COVERS, BRASS 3-7/8" DIA.				
CATALOG NUMBER	DESCRIPTION	UNIT CTN. QTY.	SHIP CTN. QTY.	UPC BAR CODE
6249	Brass duplex cover with lift lids	10	40	
6284	Brass duplex cover with 2, 1/2" threaded plugs	10	40	
6285	Brass cover with 2-1/8" x 1" combination plugs	10	40	
6287	Brass cover with 2-1/8" x 3/4" combination plugs	10	40	

CARPET FLANGES				
CATALOG NUMBER	DESCRIPTION	CARPET FLANGE O.S. DIAMETER	STD. PKG.	UPC BAR CODE
6230	Brass carpet flange, mop-tight	5-1/4"	10	
6233	Clear polycarbonate carpet flange	5-1/4"	15	
6235	Brass carpet flange*	6-1/4"	10	

* 6235 not UL Listed

TILE FLANGE					
CATALOG NUMBER	DESCRIPTION	TILE FLANGE O.S. DIAMETER	UNIT CTN. QTY.	STD. PKG.	UPC BAR CODE
6298	Brass tile/flush application flange	4-3/16"	15	60	

FLOOR BOXES FOR WOOD FLOORS

Applications

- RACO® wood floor boxes provide flush service for power or voice/data
- Non-adjustable floor boxes may be used in wood or concrete floors and are suitable for carpet, tile or wood floor applications*

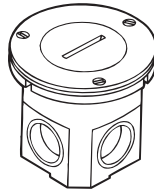
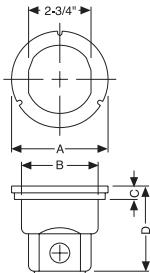
Product Features

- Boxes are non-adjustable
- Cast iron, water-tight
- Gray powder coat paint inside and out for additional corrosion resistance
- 1/2" and 3/4" threaded conduit openings are standard; all bottom openings are accessible
- If floor covering is used, discard included brass flush ring and replace with RACO® 6230 or 6235 brass carpet flange
- RACO® 6220 includes box, 2-1/8" brass flush plug cover, brass tile flange, and 15A, 125V single receptacle (H.W.D part number HBL5258)
- RACO® 6224 includes box, 6249 brass duplex cover with lift lids, and brass tile flange. Receptacle is not included
- RACO® 6223 – for use with any RACO® 3-7/8" diameter brass cover (6249, 6284, 6285, 6287) Cover must be ordered separately, brass tile flange included

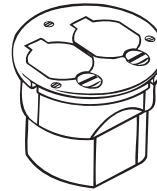
Compliance

- 

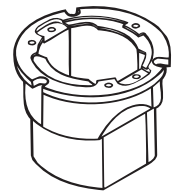
NON-ADJUSTABLE FLOOR BOX



6220



6224



6223

ORDERING INFORMATION - DIMENSIONS

SINGLE RECEPTACLE ASSEMBLY

CATALOG NUMBER	THREADED/HUBS		CU. IN.	STD. PKG.	UPC BAR CODE
	SIDE	BOTTOM			
6220	2-3/4"	1-1/2" 1-3/4"	10.3	4	

DUPLEX RECEPTACLE ASSEMBLY

CATALOG NUMBER	THREADED/HUBS		CU. IN.	STD. PKG.	UPC BAR CODE
	SIDE	BOTTOM			
6224	—	2-1/2"	18.5	4	

FLOOR BOX

CATALOG NUMBER	THREADED/HUBS		CU. IN.	STD. PKG.	UPC BAR CODE
	SIDE	BOTTOM			
6223	—	2-1/2"	18.5	4	

DIMENSIONS - CAST IRON FLOOR BOX

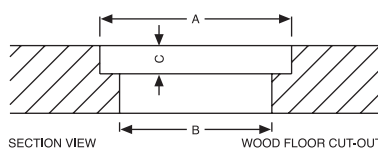
SIZE	A	B	C	D
6223	4.19"	3.39"	0.59"	3.75"
6224	4.19"	3.39"	0.59"	3.75"
6220	3.44"	2.82"	.22"	2.63"

DIMENSIONS - WOOD FLOOR CUT OUT

SIZE	A	B	C*
6224	4-1/4"	3-7/16"	5/8"
6220	3-5/8"	2-7/8"	7/16"

* If floor covering is used, vary counter bore depth accordingly. Additional bracing may be required

*CUT OUT FOR FLUSH INSTALLATION



Applications

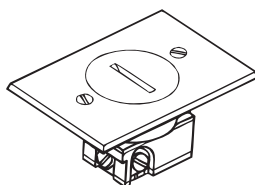
- RACO® #5236 and 6236 floor box provide flush service for power
- Non-adjustable floor boxes may be used in wood floors and are suitable for carpet, tile or wood floor applications

Product Features

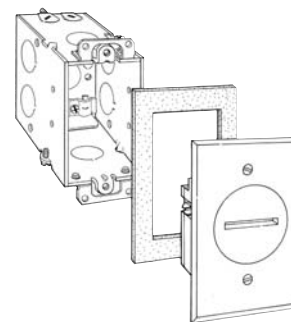
- Zinc plated steel yoke for corrosion resistance
- Back wiring – clamp-type terminals accepts up to #10 wire
- Side wiring – large brass binding head screw terminals accepts up to #10 wire
- Floor box assembly cover plate is .058 thick brushed brass
- Brass cover size is 2-3/4" wide x 4-1/2" long
- Floor box (6236 only) is 3.5" (88.9) deep

Compliance

- 



5236



6236

ORDERING INFORMATION - DIMENSIONS
RECEPTACLE-DISPLAY TYPE FOR USE IN DRY LOCATIONS BRASS PLATE AND THREADED PLUG

CATALOG NUMBER	KNOCKOUTS/HUBS		CU. IN.	STD. PKG.	UPC BAR CODE
	SIDE	BOTTOM			
5236	—	—	—	6	

**FLOOR BOX/PLATE ASSEMBLY/GASKET, BRASS PLATE AND THREADED PLUG
FLOOR BOX FOR NON-METALLIC SHEATHED CABLE OR CONDUIT**

CATALOG NUMBER	KNOCKOUTS			CU. IN.	STD. PKG.	UPC BAR CODE
	SIDES CONDUIT	ENDS CABLE	BOTTOM			
6236	4-1/2"	4	1-1/2"	18.0	4	



FLOOR BOXES FOR CONCRETE POUR - ROUND

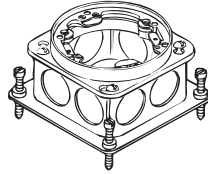
Applications

- Round floor boxes provide flush service for power or voice/data
- Floor boxes may be used for carpet or tile floor applications

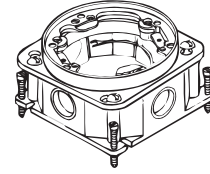
Cast Iron Floor Boxes

Product Features

- Cast iron, water-tight body, fully-adjustable
- Painted gray powder coat paint inside and out for additional corrosion resistance
- 3/4" threaded conduit openings are standard



6255, 6257



6261, 6263

Stamped Steel Floor Boxes

Product Features

- Stamped steel, concrete-tight, fully-adjustable
- Zinc-coated finish
- 1/2", 3/4", 1" and 1-1/4" knockouts; all bottom knockouts are accessible

General Product Features

- Brass tile flange provided with box
- RACO® 6230 or 6235 carpet flange must be ordered separately (included brass tile ring must be discarded before installing carpet flange)
- RACO® 6249, 6284, 6285, or 6287 brass cover must be ordered separately
- Interior and exterior leveling screws permit adjustment to meet finished floor
- Disposable concrete cap to prevent the entry of concrete during pour included

Compliances

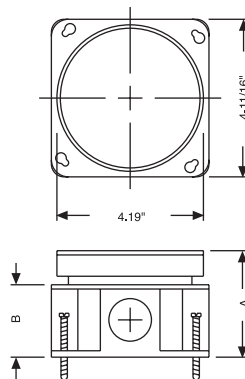
- UL
- SF

ORDERING INFORMATION - DIMENSIONS

FULLY-ADJUSTABLE FLOOR BOX STAMPED STEEL								
CATALOG NUMBER	KNOCKOUTS/HUBS		MIN. DEPTH OF POUR	BEFORE POUR EXT. HT. ADJUST.	AFTER POUR INT. FINAL ADJUST.	CU. IN.	STD. PKG.	UPC BAR CODE
	SIDE	BOTTOM						
6255	2-1/2" 2-3/4" 2-1" 2-1-1/4"	3-1/2" 2-3/4" — —	4"	1.25"	.38"	54.0	4	
6257	6-1/2" 4-3/4"	3-1/2"	3"	1.25"	.38"	37.3	4	

FULLY-ADJUSTABLE FLOOR BOX CAST IRON								
CATALOG NUMBER	KNOCKOUTS/HUBS		MIN. DEPTH OF POUR	BEFORE POUR EXT. HT. ADJUST.	AFTER POUR INT. FINAL ADJUST.	CU. IN.	STD. PKG.	UPC BAR CODE
	SIDE	BOTTOM						
6261	4-3/4"	—	3-3/4"	1.25"	.38"	33.0	4	
6263	4-3/4"	—	3"	1.25"	.38"	30.0	4	

DIMENSIONS				
	SHALLOW		DEEP	
	6263 (CAST)	6257 (STEEL)	6261 (CAST)	6255 (STEEL)
MIN. "A"	2.81"	2.91"	3.09"	3.88"
MAX. "A"	3.19"	3.29"	3.47"	4.26"
"B"	1.69"	1.69"	1.94"	2.71"



Applications

- RACO® rectangular series floor boxes are ideally suited for heavy floor traffic applications, such as malls, department stores, banks and schools
- Floor boxes are installed in poured concrete floors and are fed with conduit
- RACO® floor boxes are used in branch circuit wiring

Cast Iron Floor Boxes

Product Features

- Cast iron, water-tight body, fully-adjustable
- Gray powder coat paint inside and out for additional corrosion resistance
- 3/4" threaded conduit openings are standard

Stamped Steel Floor Boxes

Product Features

- Stamped steel, concrete-tight, fully-adjustable
- Zinc-coated finish

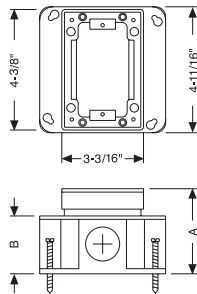
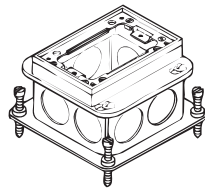
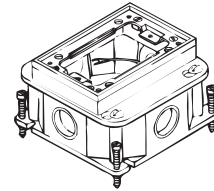
General Product Features

- Brass tile flange provided with box
- RACO® 6292 or 6295 carpet flange must be ordered separately
- RACO® 6250, 6288, 6289, or 6291 brass cover must be ordered separately
- Disposable concrete cap to prevent the entry of concrete during pour included
- Interior and exterior leveling screws permit adjustment to meet finished floor

Compliances



SINGLE-GANG


RACO®

6256, 6258

6262, 6264

ORDERING INFORMATION - DIMENSIONS

SINGLE-GANG FLOOR BOX - FULLY-ADJUSTABLE, STAMPED STEEL								
CATALOG NUMBER	KNOCKOUTS		MIN. DEPTH OF POUR	BEFORE POUR EXT. HT. ADJUST.	AFTER POUR INT. FINAL ADJUST.	CU. IN.	STD. PKG.	UPC BAR CODE
	SIDE*	BOTTOM						
6256	2-1/2" 2-3/4" 2-1" 2-1-1/4"	3-1/2" 2-3/4" — —	4"	1.25"	.38"	54.0	2	
6258	6-1/2" 4-3/4"	3-1/2" 2-3/4"	3"	1.25"	.38"	37.3	4	

SINGLE-GANG FLOOR BOX - FULLY-ADJUSTABLE, CAST IRON								
CATALOG NUMBER	THREADED/HUBS		MIN. DEPTH OF POUR	BEFORE POUR EXT. HT. ADJUST.	AFTER POUR INT. FINAL ADJUST.	CU. IN.	STD. PKG.	UPC BAR CODE
	SIDE	BOTTOM						
6262	4-3/4"	—	3-3/4"	1.25"	.38"	33.0	4	
6264	4-3/4"	—	3"	1.25"	.38"	30.0	4	

DIMENSIONS				
	SHALLOW		DEEP	
	6264 (CAST)	6258 (STEEL)	6262 (CAST)	6256 (STEEL)
MIN. "A"	2.88"	2.81"	3.19"	3.90"
MAX. "A"	3.26"	3.19"	3.57"	4.28"
"B"	1.81"	1.81"	2.06"	2.83"

* 6256 One 1" and one 3/4" knockouts on opposite sides
One 1-1/4" and one 1/2" knockouts on opposite ends

* 6258 One 1/2" and one 3/4" knockouts on opposite ends
Two 1/2" and one 3/4" knockouts on opposite sides

FLOOR BOXES FOR CONCRETE POUR - RECTANGULAR

Applications

- RACO® rectangular series floor boxes are ideally suited for heavy floor traffic applications, such as malls, department stores, banks and schools
- Floor boxes are installed in poured concrete floors and are fed with conduit
- RACO® multiple-gang rectangular floor box series may be used for both single-service and three-service (power and voice/data) applications
- RACO® floor boxes are used in branch circuit wiring

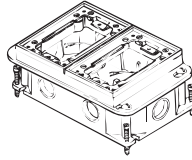
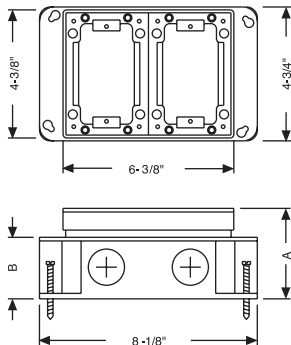
Product Features

- Cast iron, water-tight body, fully-adjustable
- Gray powder coat paint inside and out for additional corrosion resistance
- Interior and exterior leveling screws permit adjustment to meet finished floor
- Removable partitions included to meet larger capacity requirements on two- and three-gang boxes
- Disposable concrete cap to prevent the entry of concrete during the pour included
- 3/4" threaded conduit openings are standard
- RACO® 6250, 6288, 6289, or 6291 brass cover must be ordered separately

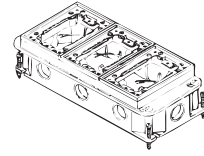
Compliances



TWO-GANG



6269



6275

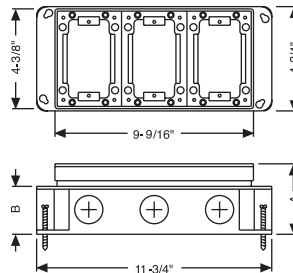
ORDERING INFORMATION - DIMENSIONS

TWO-GANG FLOOR BOX - FULLY-ADJUSTABLE, CAST IRON								
CATALOG NUMBER	THREADED/HUBS		MIN. DEPTH OF POUR	BEFORE POUR EXT. HT. ADJUST.	AFTER POUR INT. FINAL ADJUST.	CU. IN.	STD. PKG.	UPC BAR CODE
	SIDE	BOTTOM						
6269	6-3/4"	—	3-3/4"	1.25"	.63"	36.50 ea. gang	1	—

THREE-GANG FLOOR BOX - FULLY-ADJUSTABLE, CAST IRON								
CATALOG NUMBER	THREADED/HUBS		MIN. DEPTH OF POUR	BEFORE POUR EXT. HT. ADJUST.	AFTER POUR INT. FINAL ADJUST.	CU. IN.	STD. PKG.	UPC BAR CODE
	SIDE	BOTTOM						
6275	8-3/4"	—	3-3/4"	1.25"	.63"	34.80 mid. gang 36.50 end gangs	1	—

DIMENSIONS		
	DEEP	
	6269 (CAST)	6275 (CAST)
MIN. "A"	3.44"	3.44"
MAX. "A"	4.07"	4.07"
"B"	2.10"	2.10"

THREE-GANG



RACO®

Application

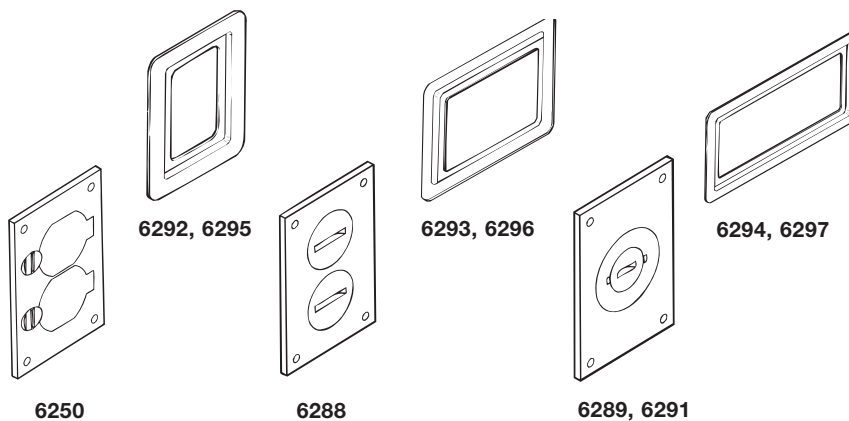
- Rectangular floor box brass covers and flanges are used to complete floor box installations

Product Features

- Rectangular brass covers are used with RACO® single-gang, two-gang, and three-gang rectangular floor boxes
- Covers are 3" wide x 4-5/32" long
- Cover screw centers are 3-5/32" x 2-1/8"
- Rectangular carpet flanges are available in brass or clear polycarbonate

Compliances

- UL
- SR


ORDERING INFORMATION - DIMENSIONS

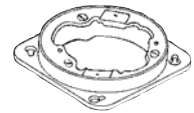
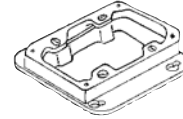
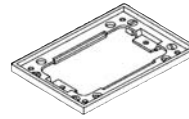
RECTANGULAR FLOOR BOX BRASS COVERS				
CATALOG NUMBER	DESCRIPTION	UNIT CTN. QTY.	SHIP CTN. QTY.	UPC BAR CODE
6250	Brass duplex cover with lift lids	10	40	■■■■■
6288	Brass duplex cover with 1-1/2" threaded plugs	10	40	■■■■■
6289	Brass cover with 2-1/8" x 1" combination plugs	10	40	■■■■■
6291	Brass cover with 2-1/8" x 3/4" combination plugs	10	40	■■■■■

RECTANGULAR CLEAR POLYCARBONATE AND BRASS CARPET FLANGES			
CATALOG NUMBER	DESCRIPTION	STD. PKG.	UPC BAR CODE
6292	1-Gang brass	20	■■■■■
6295	1-Gang clear polycarbonate	10	■■■■■
6293	2-Gang brass	10	—
6296	2-Gang clear polycarbonate	10	—
6294	3-Gang brass	10	■■■■■
6297	3-Gang clear polycarbonate	15	—

FLOOR BOXES ACCESSORIES AND REPLACEMENT COVERS

Applications

- Brass abandon plugs are sold separately for replacement in brass covers
- Split nozzle for 2-1/8" threaded cover consists of interlocking halves that provide a protective housing when assembled. The nozzle may be easily installed without removing an electrical plug from cord. Nozzle is brass colored plastic



6208, 6209,
6225, 6226

6227

6228

6237

6238

ORDERING INFORMATION - DIMENSIONS

ABANDON PLUGS - BRASS					
CATALOG NUMBER	DESCRIPTION	THREAD TYPE	FITS RACO® BRASS COVER	STD. PKG.	UPC BAR CODE
6209	3/4" Crowned, Slotted Plug	—	6287, 6291	30	
6225	1" Crowned, Slotted Plug	—	6285, 6289	25	
6226	1-1/2" Flush Slotted Plug	Fine	6284, 6288	25	
6208	2-1/8" Flush Slotted Plug	Fine	—	30	
6206	2-1/8" Flush Cap Ring for 3/4" Plug	—	6287, 6291	30	
6205	2-1/8" Flush Cap Ring for 1" Plug	—	6285, 6289	35	

SPLIT NOZZLE FOR 2-1/8" THREADED COVER			
CATALOG NUMBER	DESCRIPTION	STD. PKG.	UPC BAR CODE
6227	Split nylon gray nozzle	5	

REPLACEMENT COVER FLANGE & ADJUSTABLE COLLARS			
CATALOG NUMBER	DESCRIPTION	STD. PKG.	UPC BAR CODE
6228	Rectangular cover flange	15	—
6237	Rectangular single-gang replacement adjustable collar	4	—
6238	Round replacement adjustable collar	4	—

Service Pedestals Applications

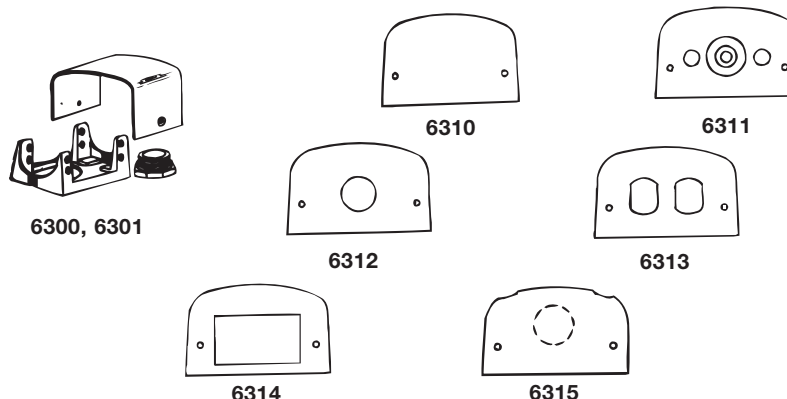
- RACO® above-the-floor service pedestals satisfy most service requirements
- These are the traditional metallic pedestals, offered as component parts to satisfy any combination of power or voice/data requirements

Product Features

- Service pedestal housing die cast aluminum frame, aluminum housing
- Stainless steel faceplates

Compliance

- 


ORDERING INFORMATION - DIMENSIONS

LOW-PROFILE SERVICE PEDESTAL HOUSING - SINGLE SERVICE FOR POWER OR VOICE/DATA			
CATALOG NUMBER	DESCRIPTION	STD. PKG.	UPC BAR CODE
6300	Frame housing, 3/4" chase nipple, w/o plates	6	■■■■■
6301	Frame housing, 1" chase nipple, w/o plates	6	■■■■■

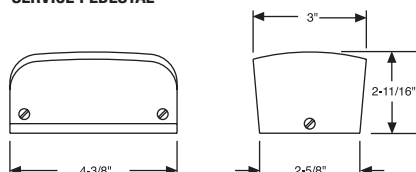
Create your own pedestal to meet specific service requirements
Order housing, face plates separately

FACE PLATES			
CATALOG NUMBER	DESCRIPTION	STD. PKG.	UPC BAR CODE
6310	Rectangular cover flange	25	■■■■■
6311	Telephone bushing with 1.00" ID and (2) 3/8" KO for coaxial	25	■■■■■
6312	Single receptacle plate with 1.39" opening	25	■■■■■
6313	Duplex receptacle plate	25	■■■■■
6314	Decorator style receptacle plate	25	■■■■■
6315	Aluminum plate with 1.11" KO	25	■■■■■

Pedestal Capacity Chart

- (Power or voice/data devices)
In certain cases, the pedestal will accommodate two receptacles. In other cases, a device may be too deep, and the maximum capacity is one receptacle

VOICE/DATA COMBINATIONS			
MAX. NO. OF RECPT.	RECEPTACLE TYPE	PLATE(S) QTY.	REQUIRED RACO® CATALOG NUMBER
1	Duplex jack outlet	1	6313, 6310
1	Decorator style of telephone outlet	1	6314, 6310
2	Decorator style of coaxial outlet	2	6314
0	Bushed opening	1	6311, 6310

SERVICE PEDESTAL


POWER COMBINATIONS			
MAX. NO. OF RECPT.	RECEPTACLE TYPE	PLATE(S) QTY.	REQUIRED RACO® CATALOG NUMBER
2	Duplex receptacles	2	6313
1	GFI receptacle	1	6314, 6310
1	Surge duplex receptacle	1	6314, 6310
2	Decorator receptacles	2	6314
2	Single receptacles	2	6312


RACO®